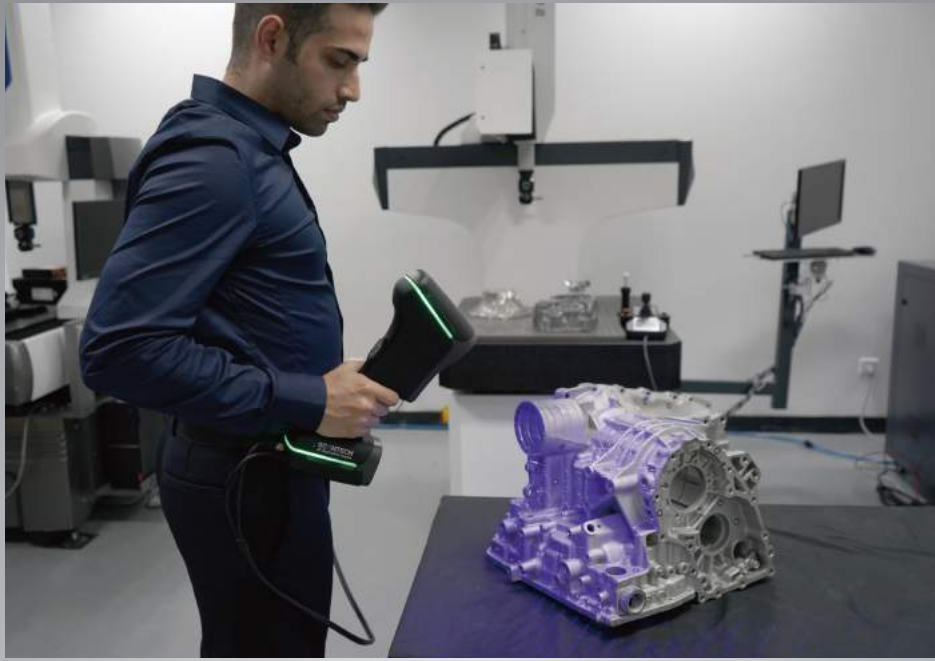


SCANTECH™

AXE - B17 3D Scanner

Measuring An Ultra-wide 3D world

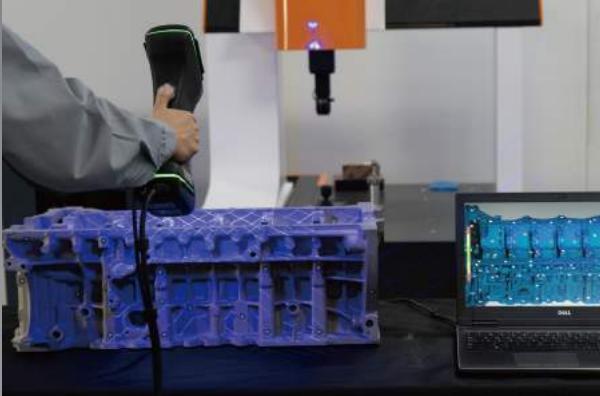




AXE-B17 3D scanner utilizes optical measurement technology with a scanning speed of 2,000,000 measurements/s, quickly capturing 3D data of the object and getting precise deviations on the geometric surface.

With global initiative built-in photogrammetry system, AXE-B17 outputs ultra-large scanning area and metrology-grade measurement accuracy. Getting rid of limitations like size, shape, material and complexity of the object, AXE-B17 can freely choose working modes of efficient unrivaled-speed scanning and accurate deep hole scanning. It generates high precision 3D inspection of medium to large-sized projects without the aid of extra devices.





Extreme-fast Response

17 crossed blue laser lines enable extreme fast and precise response with 2,000,000 measurements/s, offering extraordinary work efficiency.



Flexible Switching

Working modes are capable of freely switching based on scanning needs: efficient unrivaled-speed scanning; accurate deep hole scanning, dealing with intricate positions like deep holes and dead angles.



Unprecedented Patent

The global initiative built-in photogrammetry system is tailored for measuring medium to large-sized objects, with 0.030 mm/m of volumetric accuracy.



Ultra-wide Vision

Ultra-wide scanning area of 860 mm × 600 mm allows an optimal and smoother 3D scanning experience.

Technical Parameter

Type	AXE-B11	AXE-B17
Laser source	11 blue laser crosses (+1 extra blue laser line)	17 blue laser crosses (+1 extra blue laser line)
Deep hole scanning	Support	
Accuracy	Up to 0.020 mm	
Measurement rate	Up to 1,300,000 measurements/s	Up to 2,000,000 measurements/s
Scanning area	Up to 550 mm × 600 mm	Up to 860 mm × 600 mm
Scanning area (photogrammetry)	Standard configuration	Built-in
	Scanning area	2500 mm x 3000 mm
	Depth of field	2500 mm
Laser class	CLASS II (eye-safe)	
Resolution	0.025 mm	
Volume accuracy	Work alone	0.020 mm + 0.035 mm/m
	Work with 1m reference bar	0.020 mm + 0.020 mm/m
	Work with MSCAN-L15	0.020 mm + 0.015 mm/m
Stand-off distance	300 mm	
Depth of field	500 mm	
Output formats	.stl, .ply, .obj, .igs, .wrl, .xyz, .dae, .fbx, .ma, .asc or customized	
Operating temperature range	-10°C – 40°C	
Interface mode	USB 3.0	
Patents	CN204329903U, CN104501740B, CN104165600B, CN204988183U, CN204854633U, CN204944431U, CN204902788U, CN105068384B, CN105049664B, CN204902784U, CN204963812U, CN204902785U, CN204902790U, CN106403845B, CN209197685U, CN209263911U, CN106500627B, CN106500628B, CN206132003U, CN211121096U, US10309770B2, KR102096806B1, EP3392831A4	

