

The complete 3D scanning solution for your **reverse engineering** and **design projects**



Point and shoot
to scan your part



Clean
your mesh



Extract
geometric entities



Export
to any CAD software

Tuners. Designers. Manufacturers. Here's your new helper.

No more measurements, no more starting your design from scratch, no more trial-and-error, no more sending your parts abroad to get molds.

Improve overall design efficiency and reduce your time-to-market with the peel 2 CAD turnkey solution.



Big or small, there is a **peel** for your application!

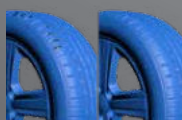
peel 2 CAD list of tools and functions



Tools to get the work done



Clean up



Fill



Mirror



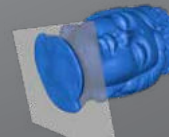
Align



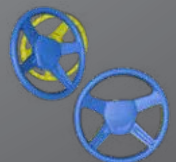
Smooth



Decimate



Trim



Merge

TECHNICAL SPECIFICATIONS



	peel 2 CAD-S	peel 2 CAD
Part size range (recommended)	0.05 - 0.5 m (2 – 20 in)	0.3 – 3.0 m (1 – 10 ft)
Accuracy	Up to 0.100 mm (0.004 in)	
Mesh resolution	0.100 mm (0.004 in)	0.250 mm (0.010 in)
Measurement rate	550,000 measurements/s	
Volumetric accuracy (based on part size)	0.300 mm/m (0.0036 in/ft) ¹	
Scanning area	143 x 108 mm (5.6 in x 4.3 in)	380 x 380 mm (15.0 x 15.0 in)
Stand-off distance	380 mm (15 in)	400 mm (15.75 in)
Depth of field	100 mm (4 in)	250 mm (10.0 in)
Light source	White light (LED)	
Texture resolution	50 to 250 DPI	50 to 150 DPI
Positioning methods	Geometry and/or targets and/or texture	
Dimensions	154 x 178 x 235 mm (6 x 7 x 9.2 in)	150 x 171 x 251 mm (5.9 x 6.7 x 9.9 in)
Connection standard	1 x USB 2.0	
Output formats	.dae, .fbx, .ma, .obj, .ply, .stl, .txt, .wrl, .x3d, .x3dz, .zpr, .iges, .step, .dxf	
Operating temperature range	5–40°C (41–104°F)	
Operating humidity range (non-condensing)	10–90%	
Certifications	EC Compliance (Electromagnetic Compatibility Directive, Low Voltage Directive), IP50, WEEE	

(1) With positioning targets or with an object presenting adequate geometry for positioning.

